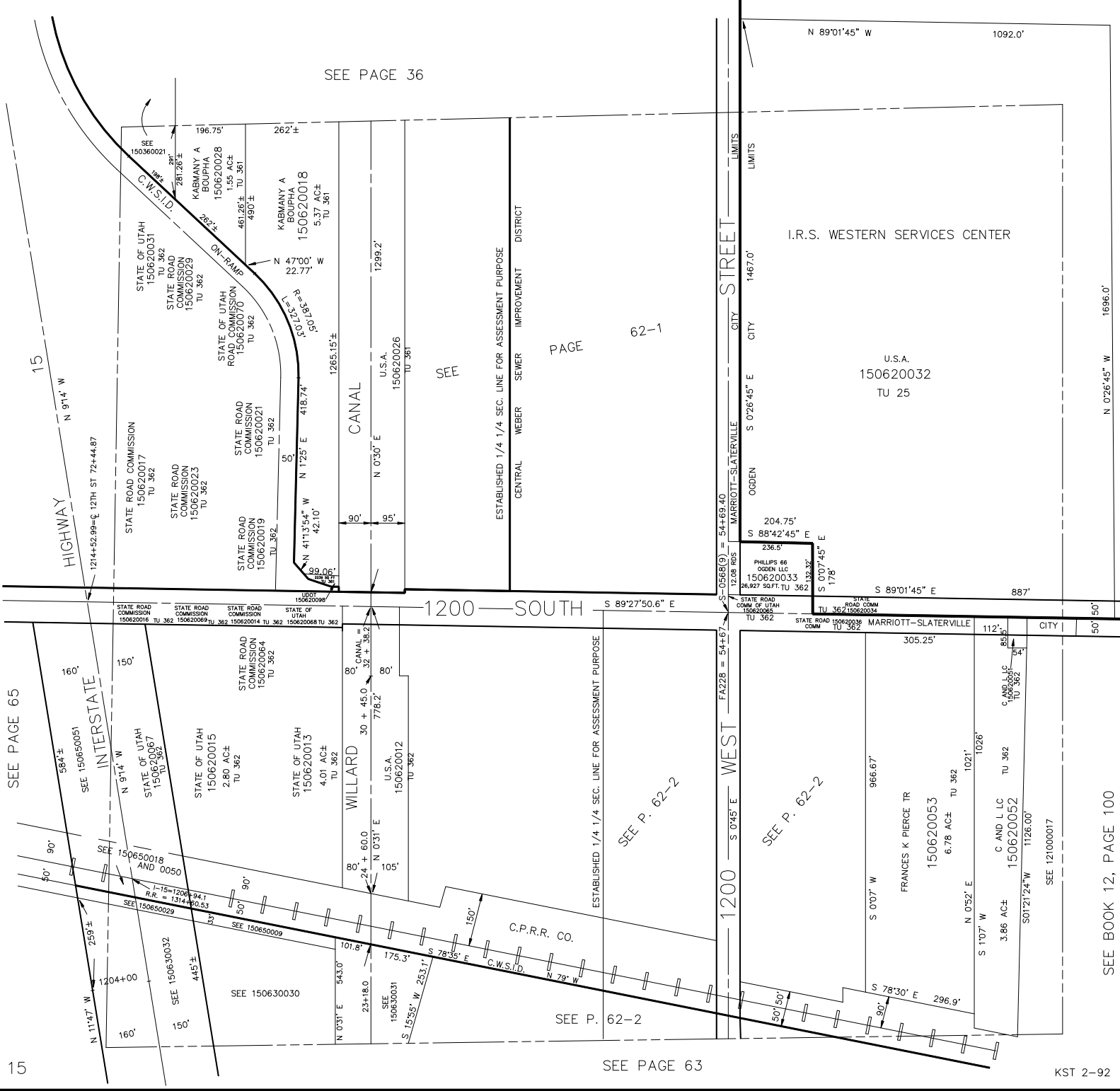


NE 1/4
SECTION 24, T.6N., R.2W., S.L.B. & M.

IN MARRIOTT-SLATERVILLE CITY, OGDEN CITY & WEBER COUNTY

TAXING UNITS: 25, 361, 362

SCALE 1" = 200'



SEE PAGE 36

PAGE 62-1

SEE

ESTABLISHED 1/4 1/4 SEC. LINE FOR ASSESSMENT PURPOSE

CENTRAL WEBER DISTRICT

I.R.S. WESTERN SERVICES CENTER

U.S.A.
150620032
TU 25

SEE PAGE 65

SEE P. 62-2

SEE P. 62-2

SEE P. 62-2

SEE PAGE 63

SEE BOOK 12, PAGE 100

KST 2-92